

Disney WONDER

PERSONAL NAVIGATOR

DAY AT SEA: WEDNESDAY, MAY 2, 2012

Sunrise: 5:38 a.m. Sunset: 7:03 p.m. Evening Attire: Cruise Casual



Please remember to turn your clocks BACK one hour before retiring Wednesday evening or first thing Thursday morning.

WALT DISNEY THEATRE

WHO WANTS TO BE A
MOUSEKETEER
WHO WANTS TO BE A

HOSTED BY YOUR CRUISE DIRECTOR CHRISTIAAN
YOUR CHANCE TO SIT IN THE HOT SEAT AND WIN \$250!

6:15 P.M. & 8:30 P.M.

 Assistance available at the entrance to the Walt Disney Theatre 30 minutes prior to show time. 



SEA WHAT'S GOING ON

DESTINATION LECTURE - GLEN DOLBERG OAHU: HOME OF THE AMERICAN KINGS

9:30 a.m. *Walt Disney Theatre*

Join Dr. Glen Dolberg for his presentation on Oahu, Home of the American Kings. Since the year 1000 AD, North America has had a number of officially crowned heads. Can you name our many American kings? In the Hawaiian island, you, too, can feel like royalty.

DISNEY'S ART OF ENTERTAINING - PAELLA

10:15 a.m. *Studio Sea (Guests 18 years and older)*

Our Chef cooks up a mouthwatering Paella with Saffron Aioli and Red Pepper Rouille in this delicious demonstration. Recipes and tasting included.

BONUS FREE CARD BINGO

10:45 a.m. *WaveBands*

Join your Cruise Staff for four cash prize games. A free yellow jackpot card to be given to all in attendance for use on game number four - the largest prize of the session!

SUNSET GATHERING AND STORYTELLING

7:00 p.m. *Goofy's Pool Stage*

Enjoy favorite Hawaiian stories that will be brought to life by Uncle Aito. As the sun sets, enjoy Uncle's conch blowing and Hawaiian chants to welcome the night and say farewell to the day.

STORYTELLING WITH UNCLE

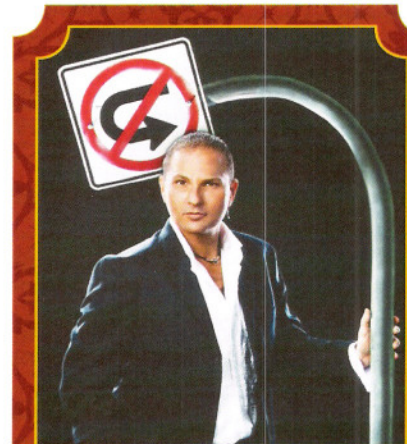
10:15 p.m. *Lobby Atrium*

Join Uncle as he shares the stories and legends of Hawai'i. Enjoy the age old stories and traditions that will live on and on as they are handed down from generation to generation...and now to you.

TIHATI PERFORMERS

10:45 p.m. *Promenade Lounge*

Be immersed into the Hawaiian island culture as our Tihati performers present their native music and dances for you.



ADULT CABARET: THE COMEDY AND MYSTERY OF GUY BAVLI

10:30 p.m.
Walt Disney Theatre

Featuring the
Comedy and Mystery
of Guy Bavli
in this adult-exclusive,
cabaret-style show.



25% OFF

Relaxing Hot Stone Massage
OR
Deep Tissue Bamboo Massage
Don't miss out!

DVC Resort Giveaway

BINGO

3:30 p.m. *Walt Disney Theatre*

Join your Cruise Staff for three cash prize games. On game four, the winner takes away a seven night resort stay at a Disney Vacation Club resort of their choice, including Aulani!



DINNER MENU

Animator's Palate: Show Dinner
Parrot Cay: Island Dinner
Triton's: French Dinner

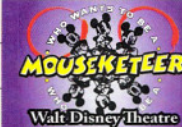
DRINK OF THE DAY


Sea Breeze (Alcoholic)
Princess Delight (Non Alcoholic)

IMPORTANT NUMBERS

Fire / Security 7-3001
Medical EMERGENCY 7-3000
Health Center 7-1923

	8:30	8:45	9:00	9:15	9:30	9:45	10:00	10:15	10:30	10:45	11:00	11:15	11:30	11:45	12:00	12:15	12:30	12:45	1:00	1:15	1:30
SPECIAL	Youth Activities Open House Oceaneer Club >10:45am				Movie: Swiss Family Robinson (PG) Funnel Vision								Virtual Tours Funnel Vision				Tihati Performers Goofy's Pool Stage >2:30pm				
CHARACTER	Character Breakfast Please check with your dining room server for your allocated Character Breakfast times this cruise.										Elvis Dk 4 Midship	Goofy Dk 9 Gazebo	Chip, Dale Dk 9 Gazebo	Minnie Dk 9 Gazebo	Elvis Dk 4 Midship						
MOVIES	Beauty and the Beast (G) Buena Vista Theatre						The Muppets (G) Buena Vista Theatre														
FUN FOR ALL AGES	Cruise Director's Morning Show Promenade Lounge and Channel 258		Hula Class with Marcus WaveBands			Glen Dolberg Lecture: Oahu: Home of the American Kings Walt Disney Theatre			Hawaiian Crafts: Kupee Bracelet Animator's Palate		Bingo Card Pre Sales		Bonus Free Card BINGO WaveBands		Sports Nickname Trivia Diversions		Tihati Performers Goofy's Pool Stage >2:30pm				
ADULTS	Books and magazines available to read Cove Cafe						Disney's Art of Entertaining: Paella Studio Sea						Singles Lunch Parrot Cay		Club 18-21 Lunch Parrot Cay		Ukelele Lessons Promenade Lounge				
	Friends of Bill W. Cadillac Lounge												Eat More To Weigh Less Seminar Vista Spa		Wine Tasting Cadillac Lounge (Pre-book)						
Teens							Morning Snack		Challenge an Officer		Bigger & Better		Rock, Paper, Scissors		Hula Class						
Edge	Open House Edge						Crafts Galore				Chillin' in the Edge		Bananagrams		Shout About Movies						
Out & About	Open House Edge																				
Oceaneer Club	8:30 Mickey Mouse Clubhouse		Under Water Crafts			Pooh Stretches		Transition Fishy Fun		Transition Mouseketeer in Training		Circle Games		Light Lunch		Club Time		Toy Story Boot Camp			
Oceaneer Lab	Human Bingo						Marshmallow Olympics		Gender Wars		Light Lunch		Movie Corner		Gases		Around the World in 7 Days				
	Crazy Crafts!						Checkers Tournament		Mario Kart Challenge												

	1:45	2:00	2:15	2:30	2:45	3:00	3:15	3:30	3:45	4:00	4:15	4:30	4:45	5:00	5:15	5:30	5:45	6:00	6:15	6:30	6:45	
SPECIAL	Tihati Performers Goofy's Pool Stage				Movie: The Aristocats (G) Funnel Vision								Youth Activities Open House Oceaneer Lab >8:30pm									
CHARACTER											The Gang Atrium Portside		The Gang Atrium Portside									
MOVIES	Some Like It Hot (1959) Buena Vista Theatre						War Horse (PG-13) Buena Vista Theatre >7:31pm															
FUN FOR ALL AGES	Tihati Performers Goofy's Pool Stage		Gameshow: Disney Wheel Studio Sea			Bingo Card Pre Sales		DVC Resort Giveaway BINGO Walt Disney Theatre		Live Piano Lobby Atrium		Pre-Dinner Music Promenade Lounge		80's Music Name That Tune Diversions								
	Hawaiian Language Class Promenade Lounge						Soccer Kick Wide World of Sports Deck		Name That Disney Tune LIVE Promenade Lounge													
ADULTS	Broadway Trivia with Christiana WaveBands		Tequila/Margarita Tasting Cadillac Lounge (Pre-book)			Rum Tasting Diversions (Pre-book)		Cruise Staff Coffee Mingle Cove Cafe														
	Acupuncture Seminar: Arthritis Solutions Outlook Cafe																					
Teens	Hula	Card Games	Smoothie Hour	Challenge an Officer	Video Scavenger Hunt	Jenga	Movie Time															
Edge	Movies	Story Telling	Chillin' in the Edge	Kinect Challenge	Wipeout!	Craft Corner	Dance															
Out & About	Hidden Mickeys Meet Deck 2 Midship						Dodgeball Wide World of Sports Deck						Dodgeball Wide World of Sports Deck									
Oceaneer Club	Picture This		Picture This Frames		Sliding Fun		Wonderful World of Magic		Cartoon Corner		Dinner											
	Story Time		Muppet Making		Circles of Fun		Mario Kart Challenge		Go Fetch!													
Oceaneer Lab	Gases in Action		Lights, Camera, Improv!			Computers		Stitch's Space Goo		Transition Story Telling with Uncle		Animation Antics		Lei Crafts								
	Disney's Scene It!		Transition All Sorts of Sports Wide World of Sports Deck			Transition Coloring in Fun		Transition														

	7:00	7:15	7:30	7:45	8:00	8:15	8:30	8:45	9:00	9:15	9:30	9:45	10:00	10:15	10:30	10:45	11:00	11:15	11:30	11:45	12:00	
SPECIAL	Sunset Gathering & Storytelling Goofy's Pool Stage				Documentary: Waking Sleeping Beauty (PG) Funnel Vision								Movie: Tangled (PG) Funnel Vision									
CHARACTER	Belle Atrium Starboard										For detailed Character information, please dial 7-PALS or refer to the information screen in the Lobby Atrium.											
MOVIES	War Horse (PG-13) Buena Vista Theatre						The Help (PG-13) Buena Vista Theatre >12:26am															
FUN FOR ALL AGES	Superstar Karaoke Studio Sea					Mickey Mania Studio Sea		Storytelling with Uncle Lobby Atrium		Tihati Performers Promenade Lounge												
	Northern Lights LIVE Promenade Lounge		Easy Listening Promenade Lounge		Mickey Mania Studio Sea																	
ADULTS	Music and Martinis Cadillac Lounge		Live Piano Cadillac Lounge			80's Hits with Speakerbox WaveBands		Variety: Guy Bavli Walt Disney Theatre		Karaoke WaveBands												
	Adult Hula Lessons WaveBands		Ladies Night Vista Spa <8:00pm (Pre-book)			Ole Blue Eyes Cadillac Lounge		Live Piano Cadillac Lounge		Late Night Piano Cadillac Lounge												
Teens	Movie	Cheat - Card Games	Dance Central	Pump It Up! @ Vista Spa Meet at Vibe	Star Gazing Wide World of Sports Deck	Mickey Mania / Games / Vibe open til 2am																
Edge	Dance Central		Chillin' in the Edge		Spoons Tournament		Mad Gabs	Trivia	Star Gazing Wide World of Sports Deck	Movie Night until 1am												
Out & About	3 on 3 Basketball Wide World of Sports Deck						Mickey Mania Studio Sea															
Oceaneer Club	Slide Time Pluto's Pajama Party		Slide Time		Under the Sea Crafts		Games Galore		Block Fun		Movie Time until 1am											
	Movie Time						Puzzle Time		Sing Along		Slide Time		Chillin' in the Club until 1am									
Oceaneer Lab	Crafts	Piston Cup Challenge		Lab Time	Mickey Mania Studio Sea	Transition Uno Challenge	Gaga Ball	Interactive Movie - Lilo & Stitch														
	Fish Crafts		Wii Sports		Jewelry Making		Computer Madness															

YOUTH ACTIVITIES

YOUTH ACTIVITIES

HOURS OF OPERATION

		PHONE
Flounder's Reef Nursery	9:00 a.m. - 11:00 p.m.	7-18500
Oceaneer Club Open House	8:30 a.m. - 10:45 a.m.	7-1440
Oceaneer Club Secured Program	11:00 a.m. - 12:00 a.m.	7-1440
Oceaneer Lab Secured Program	9:00 a.m. - 5:00 p.m.	7-1445
Oceaneer Lab Open House	5:15 p.m. - 8:30 p.m.	7-1445
Oceaneer Lab Secured Program	8:30 p.m. - 12:00 a.m.	7-1445
Edge Vibe	9:00 a.m. - 1:00 a.m.	7-5810
	10:00 a.m. - 2:00 a.m.	7-1456



YOUTH ACTIVITIES OPEN HOUSE

Piston Cup at 7:15 p.m. - Let's get ready to race with your own miniature car creation! It's all good, clean fun.

CLUBHOUSE SERIES

Mouseketeer in Training at 11:00 a.m. - Take part in training exercises to become an Official Mouseketeer, with the old pal, Mickey Mouse.

STORYBOOK SERIES

Pluto's Pajama Party at 7:15 p.m. - Come join Pluto at his PJ party as we read bedtime stories and play games.

JUMP UP! SERIES

All Sorts of Sports at 2:45 p.m. - Meet us in the Oceaneer Lab and we'll travel to the Wide World of Sports Deck together for some outdoor fun!

CREATE & INVENT SERIES

Gases in Action at 1:30 p.m. - A hands-on experiment-filled activity where you will learn about the three states of matter.

IN THE SPOTLIGHT SERIES

Mickey Mania at 8:30 p.m. - Challenge your fellow friends to the ultimate Disney trivia game show onboard.

SOLVE IT! SERIES

Puzzle Time at 9:00 p.m. - Build puzzles smartly and stop the puzzle villains from creating trouble.

OUT AND ABOUT SERIES - Recommended for ages 8-14.

Dodgeball at 3:45 p.m. Let's play fun sports games with your friends and dodge 'em!

YOUTH ACTIVITIES OPEN HOUSE

Open House today is in the Oceaneer Club from 8:30 am to 10:45 am, and in the Oceaneer Lab from 5:15 pm until 8:30 pm.

HIGH SEAS CHARACTER CAMPOUT

Come join the Oceaneer Lab for a High Seas Character Campout on May 10th. We will be joined by some of the Characters as we play games, have a dance party, eat Pizza, read stories and sleep out in the Oceaneer Club and Lab. There is limited spaces so be sure to book your spot at Guest Services or Port Adventures and for more information ask your Youth Activities Team. (This program is for 5-10 yr olds)

ACTIVITIES FOR 11-14 YEAR OLDS

Deck 2 Midship (7-5810)

STAR GAZING @ 10:15PM

Discover the "Stars of Hawaii" as we sail towards the Hawaiian Islands

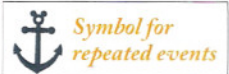
ACTIVITIES FOR 14-17 YEAR OLDS

Deck 11 Midship (7-1456)

STAR GAZING @ 10:15PM

Discover the "Stars of Hawaii" as we sail towards the Hawaiian Islands

FUN FOR ALL AGES



CRUISE DIRECTOR'S MORNING SHOW

8:30 a.m. Promenade Lounge

Get your day started right with your Cruise Director Christiaan, Lesley, your Assistant Cruise Director and a chat over your morning coffee. Also broadcast live on television channel 258.

OHANA HULA LESSON

9:00 a.m. WaveBands

Join Marcus, our Hawaiian host as he teaches the Hawaiian art form of hula. This tradition tells the stories of Hawaii's Gods and legends through graceful interpretive dance.

HAWAIIAN CRAFTS

10:30 a.m. Animator's Palate

Join Marcus, your Hawaiian MC for a unique opportunity to make a Kupee Bracelet.

TAHATI PERFORMERS

1:00 - 2:30 p.m. Goofy's Pool Stage

Be immersed into the Hawaiian island culture as our Tahati performers present their native music and dances for you.

HAWAIIAN LANGUAGE CLASS

2:00 p.m. Promenade Lounge

Join Marcus as we introduce you to the Hawaiian language. Learn the vocabulary of the Islands and share your favorite Hawaiian word with all you meet.

CHARACTER APPEARANCES



Come to the Lobby Atrium, portside today at 3:00 & 4:45 p.m. to see the whole gang! The fab five and Chip 'n' Dale will be available for your family photos. *Please note: Photographs will be limited to 1 per stateroom.*

Also come and see Snow White in the Lobby Atrium, portside this evening at 7:30 p.m.

ADULT EXCLUSIVE ENTERTAINMENT

BEVERAGE TASTINGS AND SEMINARS

(Pre-book at Guest Services, Nominal fee)

Savor and enjoy our special tastings and seminars.
Old World White Wine Tasting **1:00 p.m. Cadillac Lounge**
Tequila and Margarita Tasting **2:45 p.m. Cadillac Lounge**
Rum Tasting **3:30 p.m. Diversions**
Whiskey Tasting **10:00 p.m. Cove Café**

VISTA SPA HIGHLIGHTS

Eat More To Weigh Less Seminar **12:00 p.m. Vista Spa**
Facial Workshop: Anti-Aging Secrets **1:15 p.m. Diversions**
Acupuncture: The Point of Wellbeing/Arthritis Solutions **3:15 p.m. Outlook Cafe**
Ladies Night **8:00 p.m. Vista Spa (Pre-book)**

UKELELE LESSONS

1:00 p.m. Promenade Lounge (Limited availability)

Join Uncle as he introduces you to the traditional Hawaiian instrument, the ukelele.

ADULT HULA LESSON

7:30 p.m. WaveBands

Join MC Marcus, our Hawaiian host as he teaches the Hawaiian art form of hula. This tradition tells the stories of Hawaii's Gods and legends through graceful interpretive dance - come learn to hula!

PIANO AND VOCAL FAVORITES

7:30, 9:30, 10:30 & 11:30 p.m. Cadillac Lounge

Enjoy a Sing-a-Long with Tim Adshhead featuring a special set at 9:30 p.m. entitled 'Ole Blue Eyes'.

LIVE MUSIC WITH SPEAKERBOX

9:45 p.m. WaveBands

Join our house band Speakerbox as they play LIVE for your listening and dancing pleasure. Don't miss your favorite 80's hits at 9:45 p.m.

MORE TO ENJOY WHILE ONBOARD

VISTA ART GALLERY - DUCKY SILENT AUCTION

Visit the Vista Art Gallery today to place your bids on a great selection of art by Don "Ducky" Williams. Bidding will start at 1:00 p.m. and end at 4:00 p.m. - don't miss out on a wonderful opportunity to own a piece of art from a true Disney icon.

EARLY FLIGHT DEPARTURES

Guests with flights departing Los Angeles prior to 12:30 p.m. are kindly asked to notify Guest Services located on Deck 3, Midship no later than 12:00 noon on Thursday 10th May.

SURF @ SEA

\$.75 per minute or save money by buying blocks of time. \$55 for 100 minutes, \$100 for 250 minutes and \$150 for 500 minutes. Wireless information sheets are available at Guest Services, Deck 3, Midship. Due to the technology involved and satellite connectivity, the onboard internet service will be noticeably slower than you may be accustomed to and may at times be interrupted or unavailable.



CAMERA OF THE DAY

Purchase the camera of the day and receive a FREE memory card. Visit Shutters on Deck 4, Aft to find out more information! Hurry!



BOOK YOUR NEXT DISNEY CRUISE LINE VACATION TODAY AND SAVE!

Don't waste time! Book your next cruise today and you'll save 10%, receive up to a \$200 onboard credit, and pay a reduced deposit! Visit the Future Cruise Sales Desk, Midship Deck 4 or call 7-2848.



FIND YOUR VACATION PARADISE

Join us at 1:00 p.m. in Studio Sea, Deck 4, Midship for a fun and informative group presentation. You could win \$300 in onboard credit just for attending!



SALON SAMPLER SPECIAL

Enjoy a special treat from our Hair Salon! Frangipani Scalp Massage, Neck and Shoulder Massage, Foot and Ankle Massage, Collagen Eye treatment. 45 minutes - all for ONLY 99.00!



Pearl Harbor, Halakeala Crater, Diamond Head Crater, Volcanoes National Park, Waimea Canyon are some must-sees during your Hawaiian adventure! Whatever you choose to do, let your friendly Port Adventures team assist you at the Port Adventures desk, Deck 3 Midship.

OPERATING HOURS

Disney Vacation Club Desk	9:00 A.M. - 12:00 P.M. 2:30 P.M. - 10:00 P.M.	Port Adventures Desk	9:30 A.M. - 1:00 P.M. 2:00 P.M. - 5:00 P.M.
Future Cruise Desk	10:00 A.M. - 1:00 P.M. 4:00 P.M. - 6:00 P.M. 7:30 P.M. - 8:30 P.M.	Port Shopping Desk	7:00 P.M. - 8:30 P.M. 7:30 P.M. - 8:30 P.M.
Goofy's Pool	6:00 A.M. - 12:00 A.M.	Preludes (Snacks)	OPEN DURING SHOW TIMES
Guest Services Desk	24 HOURS	Quarter Master	24 HOURS
Health Center	9:30 A.M. - 11:00 A.M. 4:30 P.M. - 7:00 P.M.	Quiet Cove Pool	6:00 A.M. - 12:00 A.M.
Mickey's Mates	9:00 A.M. - 10:00 P.M.	Shutters	10:00 A.M. - 10:30 P.M.
Mickey's Pool	8:00 A.M. - 10:00 P.M.	Treasure Ketch	9:00 A.M. - 10:00 P.M.
Mickey's Slide	9:00 A.M. - 5:30 P.M.	Radar Trap	6:00 P.M. - 10:00 P.M.
Mickey Splash Zone	8:00 A.M. - 8:00 P.M.	Vista Gallery	12:30 P.M. - 4:00 P.M. 6:00 P.M. - 9:00 P.M.
		Vista Spa Fitness Center	6:00 A.M. - 10:00 P.M.
		Vista Spa and Salon	8:00 A.M. - 10:00 P.M.

Dining Hours

Consumers who order raw or partially cooked, ready-to-eat food of animal origin, are hereby informed that the food is not sufficiently cooked to ensure its safety.

BREAKFAST

Goofy's Galley	6:45 A.M. - 9:00 A.M.
Beach Blanket Buffet	7:15 A.M. - 10:45 A.M.
Tritons	8:00 A.M. - 9:30 A.M.

LUNCH

Pluto's Dog House	10:45 A.M. - 6:00 P.M.
Pinocchio's Pizzeria	10:45 A.M. - 6:00 P.M.
Goofy's Galley	10:45 A.M. - 7:00 P.M.
Tritons	12:00 P.M. - 1:30 P.M.
Beach Blanket Buffet	12:00 P.M. - 2:00 P.M.
Parrot Cay	12:00 P.M. - 1:30 P.M.

DINNER

Animator's Palate*	5:45 P.M. & 8:15 P.M.
Tritons*	5:45 P.M. & 8:15 P.M.
Parrot Cay*	5:45 P.M. & 8:15 P.M.
Pluto's Dog House	6:00 P.M. - 9:30 P.M.
Beach Blanket (A La Carte)	6:30 P.M. - 8:30 P.M.

LATE NIGHT SNACKS

Goofy's Galley (ICE-CREAM)	7:00 P.M. - 11:00 P.M.
Pinocchio's Pizzeria	9:30 P.M. - 12:00 A.M.
Promenade Lounge (Families)	11:00 P.M. - 12:00 A.M.
Diversions (Adults)	11:00 P.M. - 12:00 A.M.

* Pre-arranged seating assignments

ADDED FEATURES

Beverage Station	24 HOURS
Room Service	24 HOURS

Bar Hours

Bars are solely for adults 18 and older, except during scheduled family events. Adults must be 21 and older to consume alcoholic beverages.

ON DECK

Cove Cafe	6:45 A.M. - 12:00 A.M.
Outlook Cafe & Wine Bar	9:30 A.M. - 12:00 A.M.
Pinocchio's Bar	9:00 A.M. - 12:00 A.M.
Pluto's Dog House Bar	10:45 A.M. - 6:00 P.M.
Signals Bar	9:30 A.M. - 11:00 P.M.

LOUNGES

Preludes	OPEN DURING SHOW TIMES
Promenade Lounge	8:00 A.M. - 12:00 A.M.
Studio Sea	OPEN DURING EVENTS ONLY

Route 66

(18 AND OLDER AFTER 9:00 P.M.)

Cadillac Lounge	5:30 P.M. - 12:00 A.M.
Diversions	12:00 P.M. - 12:00 A.M.
WaveBands	OPEN DURING SCHEDULED EVENTS OPEN TILL 2:00 A.M.

SHOPPING

Mickey's Mates



Pick-A-Pearl

Enjoy Hawaii's most popular way to create your own jewelry when you pick-a-pearl with Maui Divers. A luminescent jewel emerges from its shell right before your eyes as you select a setting that fits your personal style. Join the excitement from 10:00 a.m. to 4:00 p.m. outside Treasure Ketch, Deck 4 Midship.



TREASURE KETCH

Crazy Shirts Hawaii

Disney Cruise Line Hawaii 2012 apparel by Crazy Shirts. These shirts are known for being Dyed beautiful colors with unique ingredients. The Blue Hawaii Dyed tees are dyed using the same syrup found in a Blue Hawaii Cocktail. Items are limited to 2 per person, per day.

Chamilia

Create and personalize your own Chamilia Bracelet. Choose from a selection of Sterling Silver beads with many of them featuring your favorite Disney Characters!

IMPORTANT INFORMATION

Security Notice

All Guests (including Children) who wish to disembark or embark the ship are required to present their Key to the World card at the gangway. A photo ID is also required for those Guests who are 18 years of age or older. Guests under the age of 18 are required to have a Parent, Guardian or other responsible adult sign an authorization form at the time it is given out if they wish to go ashore unaccompanied. Authorization forms are available at the gangways and Guest Services.

Cold and Flu Reminder

Please wash hands frequently and thoroughly, particularly before meals. Contact the Health Center by dialing 7-1923, should anyone in your party become ill.

Corridor Quiet Hours

As a courtesy to all our Guests, please recognize quiet hallway hours from 10:00 p.m. til 8:00 a.m.

Inclement Weather

For the safety of all Guests, outdoor events may be changed due to unforeseen weather conditions.

Environmental Message

With Disney's commitment to the Environment please refrain from throwing anything over the Ship's side. Thank you.

No Reserved Seats Policy

As a courtesy to all Guests we kindly advise that the saving of seats is not permitted in the Walt Disney Theatre, and the saving of the sun loungers is not permitted on Deck 9 and 10. Items left unattended will be returned to lost and found at Guest Services Deck 3 Midship.

Smoking

For the comfort of our guests the following areas are designated as Smoking areas: Open decks on the Starboard Side (excluding Mickey Pool area). Smoking is not permitted on Deck 4, Starboard from 6:00am to 6:00pm. Smoking is prohibited in all guest staterooms. Guests found smoking in their staterooms will be charged a \$250 stateroom recovery fee.

Internet

Due to the technology involved and satellite connectivity, the onboard internet service will be noticeably slower than you may be accustomed to and may at times be interrupted or unavailable.

Walt Disney Theatre

Theatrical performances may use artificial fog, strobe lights, pyrotechnics and other special effects. For the safety of our performers and the comfort of those around you, photography and video recording is prohibited.

Verandah Safety

Please do not leave any combustible materials on your balcony when not present in your stateroom for safety reasons.